

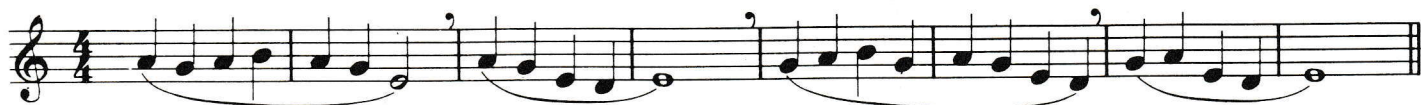
## DOTTED HALF NOTES

The dot after a note is equal to half the value of that note, so a dotted half note is given a total of three beats (♩ + ♩).



## THE MISSING NOTE

SOLIL LA QUI



## SONG IN MAJOR

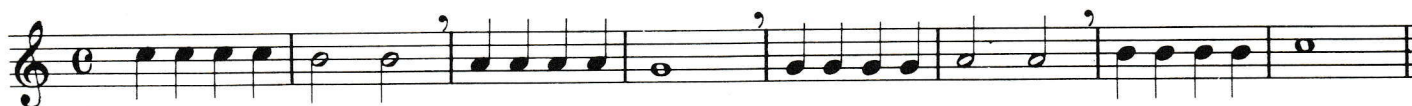


## SONG IN MINOR



## SAD SONG

When you tongue, think of the syllable "tah". Move the tip of the tongue lightly and quickly, as when you talk or sing. It should feel very natural and relaxed.



## MERRILY WE ROLL ALONG



## LEAPING THE OCTAVE

